



During the Year

Conversation Time

A. Listen and repeat.

B. Listen and point to the speakers.

C. Role-play the conversation with two other students.



D. Review. Listen and repeat.



I put away the books.



And I swept the floor.



Thank you very much!

Word Time

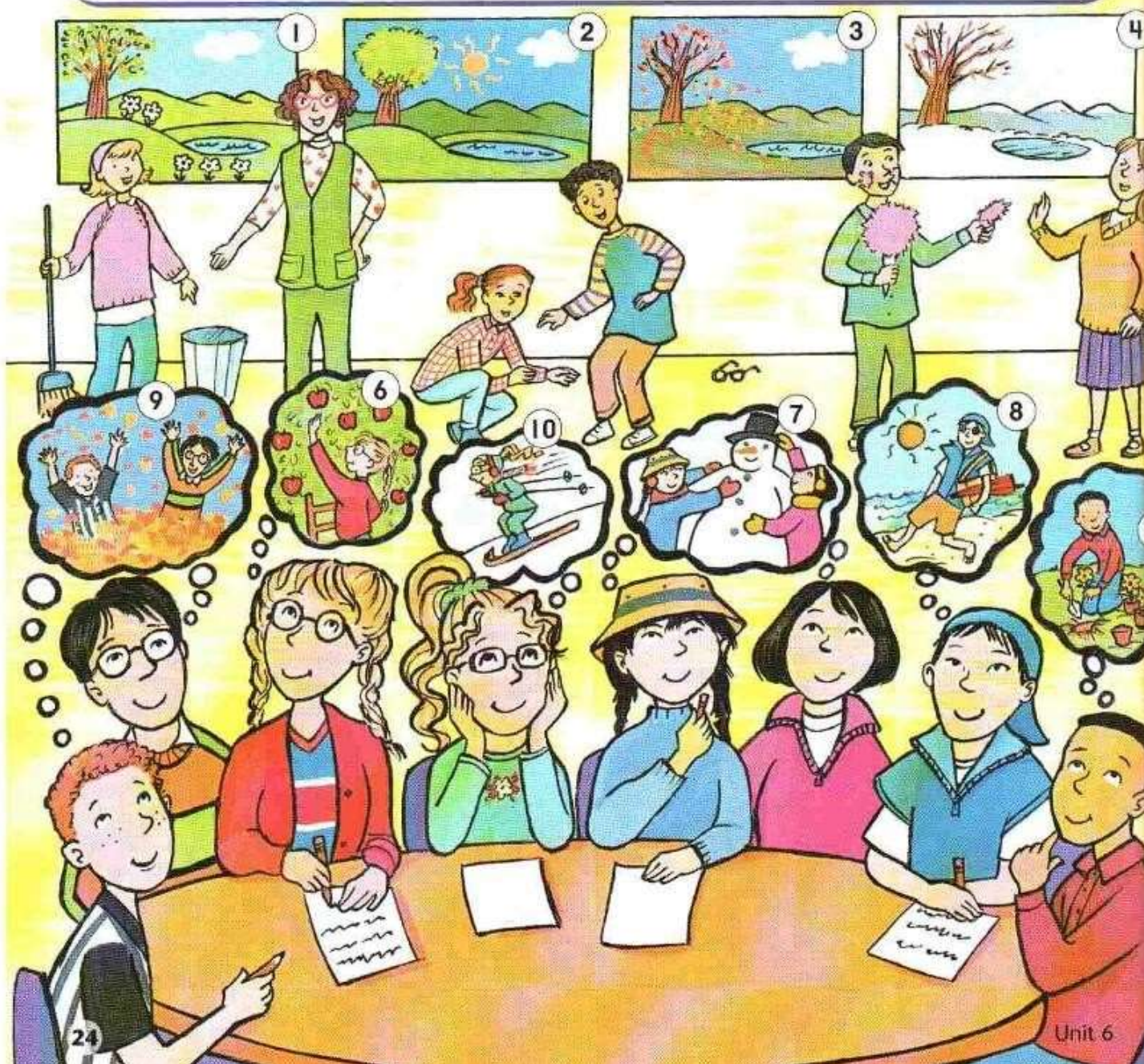
A.  Listen and repeat.

- | | |
|-----------------------|--------------------|
| 1. spring | 2. summer |
| 3. fall | 4. winter |
| 5. plant flowers | 6. pick apples |
| 7. build a snowman | 8. go to the beach |
| 9. play in the leaves | 10. go skiing |

B. Point and say the words.

C.  Listen and point.

D. Write the words.
(See pages 63–66.)



Practice Time

A.  Listen and repeat.


I'll plant flowers in the spring.

I'll = I will
He'll = He will
We'll = We will

You'll = You will
She'll = She will
They'll = They will

I won't go skiing.

won't = will not

B.  Listen and repeat. Then practice with a partner.

1. I / go to the beach / summer
pick apples



2. You / pick apples / fall
go to the beach



3. They / build a snowman / winter
plant flowers



4. He / plant flowers / spring
build a snowman




5. We / play in the leaves / fall
go skiing




6. She / go skiing / winter
play in the leaves

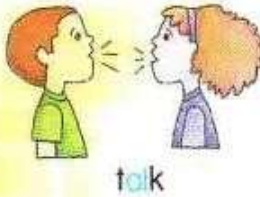
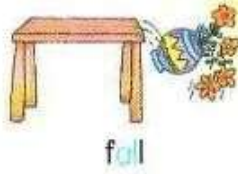



C. Look at page 24. Point to the picture and practice with a partner.

D.  Listen and sing along. (See "He'll Pick Apples in the Fall" on page 59.)

Phonics Time

A.  Listen and repeat.



B.  Listen and circle.

1.

small
shawl

2.

claw
tall

3.


paw
wall

4.

call
chalk

5.

walk
jaw

C.  Read the sentences. Write the numbers. Then listen.

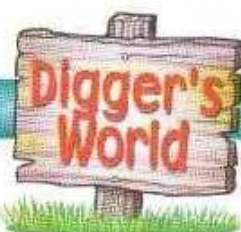
1. Paul isn't tall. He's small.
2. Paul can't talk. He can't walk. He can't do the laundry.
3. But Paul can crawl. Oh, no! Paul is in the hall.
4. Paul has chalk. Look at the wall. He can draw.



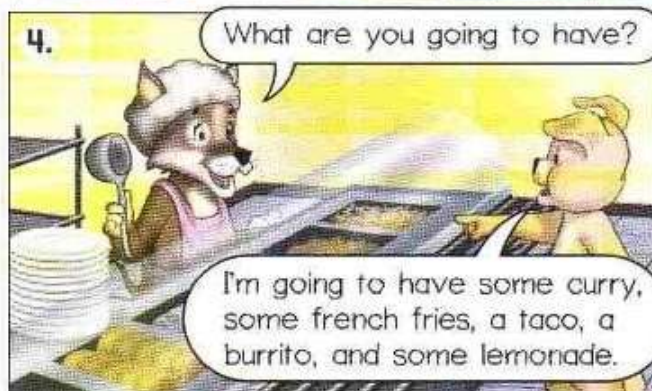


Review 2

Story Time



A. Listen and repeat.



B. Look at A. Listen and point.

C. Listen. Circle True or False.

1. True False 2. True False 3. True False 4. True False 5. True False

D. Role-play these scenes.

Activity Time



A. Listen and write.

1. P____l is going to t____k to a tig____.
2. Pet____ is going to dr____ a bott____.
3. The lobst____ is going to cr____l in the pudd____.
4. My moth____ is going to make dinn____ for my unc____.



B. Complete the puzzle. What's Annie going to have?

1. He'll plant flowers in the _____.
2. I'm going to rent a _____. I'm not going to see a show.
3. She's hungry. She's going to buy a _____.
4. What's he going to have? He's going to have a _____.
5. We'll play in the leaves in the _____.
6. They'll go to the beach in the _____.
7. I'll go skiing in the _____.
8. I'm going to mail a _____.

