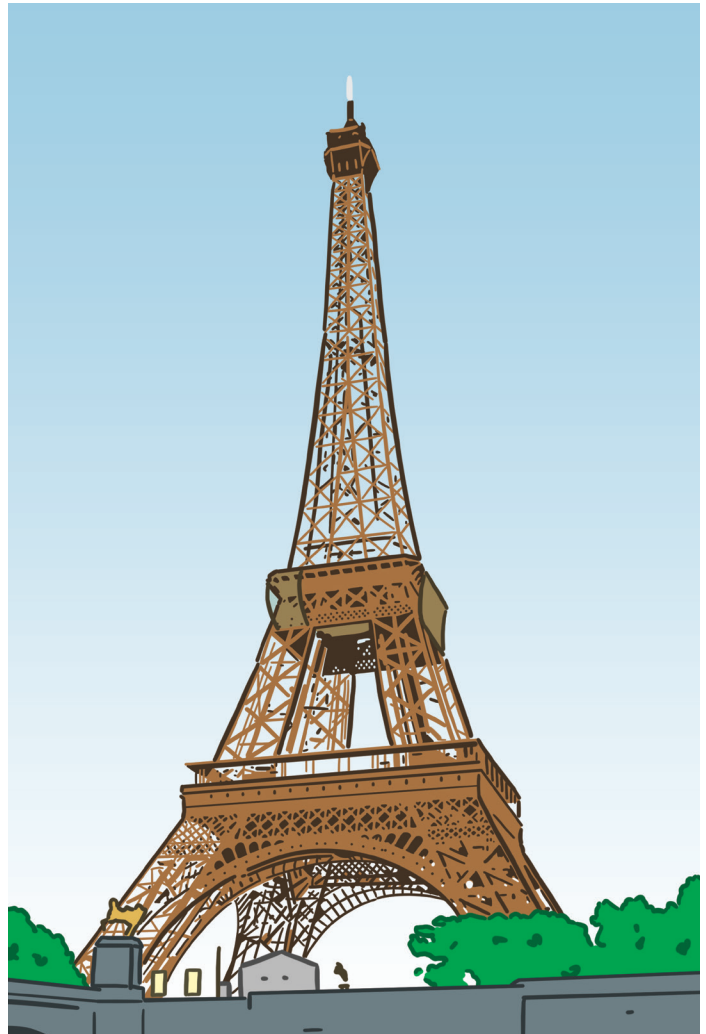


# The Eiffel Tower



## Pre-Reading

### A. Warm-Up Questions

1. Have you ever been to Paris?
2. Do you know when the Eiffel Tower was built?
3. Why do you think the Eiffel Tower was built?
4. Besides being a tourist attraction, what other purposes does the Eiffel Tower serve?
5. Do you think the Eiffel Tower is an attractive monument?

### B. Vocabulary Preview

Match the words on the left with the correct meanings on the right.

- |                     |                                                       |
|---------------------|-------------------------------------------------------|
| ___ 1. unanimously  | a) to destroy, to tear down                           |
| ___ 2. submit       | b) to place, to put in something for use              |
| ___ 3. protest      | c) a tall building                                    |
| ___ 4. eyesore      | d) in complete agreement                              |
| ___ 5. platform     | e) a frame of crossed pieces of metal or wood         |
| ___ 6. panoramic    | f) something unpleasant or ugly to look at            |
| ___ 7. demolish     | g) a flat surface to stand on                         |
| ___ 8. masterpiece  | h) to enter or put forward for discussion or decision |
| ___ 9. install      | i) something made with very great skill               |
| ___ 10. appeal      | j) to oppose, to be against something                 |
| ___ 11. latticework | k) showing a complete, uninterrupted view             |
| ___ 12. skyscraper  | l) attraction                                         |

## Reading

1. The Eiffel Tower is located in Paris, France. It was constructed between 1887 and 1889 to be the entranceway to the 1889 World's Fair and to celebrate the 100<sup>th</sup> anniversary of the French Revolution. The tower was opened to visitors on May 6, 1889.
2. Gustave Eiffel's design was chosen **unanimously** from among 700 that were **submitted** to the World's Fair design competition. However, many Parisians, especially artists, did not like his design and **protested** the tower's construction. They thought it would be an **eyesore**, but once it was built, most Parisians soon loved the tower.
3. The tower is made of iron and weighs over 7,000 tons. It features open **latticework** supports, an unusual design at the time. Many of the scientific principles used in its design and construction are still used to construct modern **skyscrapers**. Over 40 tons of paint are applied to the tower every seven years to keep it from rusting.
4. The Eiffel Tower is over 1,000 feet (about 305 meters) tall, from the ground to the tip of the antenna at its top, and has a staircase with 1,665 steps. There are also elevators to take visitors to the top **platform** where there is a **panoramic** view of Paris. The original elevators, now computerized, are still in use.
5. Originally, the Eiffel Tower was to remain in place for just 20 years, but its antenna saved it from being **demolished** in 1909. Telegraph companies were using it at the time, and since then, it has become part of France's communication system, including its radio and television services.
6. The Eiffel Tower has also become a symbol of Paris. It is the most recognized monument in Europe, and many people think it is an architectural **masterpiece**. Over 200 million people have visited it since May of 1889. In 2000, a new lighting system was **installed**, and a nightly light show has added to its **appeal** for both Parisians and tourists.

*The Eiffel Tower, which was meant to be a temporary structure, is an iconic symbol of France.*

## Comprehension

### A. True or False?

Read the statements below.

If the statement is true, write T beside the sentence.

If it is false, write F and correct the information.

- \_\_\_\_\_ 1. The Eiffel Tower was originally built to be a communications tower.
- \_\_\_\_\_ 2. Some artists at the time thought the tower was ugly.
- \_\_\_\_\_ 3. Some of the design principles of the tower are still used today.
- \_\_\_\_\_ 4. The original elevators in the tower have all been replaced.
- \_\_\_\_\_ 5. The tower was supposed to be destroyed in 1909.

### B. Ask and Answer

Practice asking and answering the following questions with your partner.

Then write your answers in complete sentences in your notebook.

- 1. Why was the Eiffel Tower built?
- 2. Who designed the Eiffel Tower and how was this design chosen?
- 3. Describe the Eiffel Tower.
- 4. Why does the tower have to be painted frequently?
- 5. Why was the tower not torn down in 1909, as originally planned?
- 6. In addition to being a tourist attraction, what other importance does the tower have today?
- 7. What additions have been made to the tower recently?

## Vocabulary Review

Complete the sentences using vocabulary from page 1.  
You may need to change the word forms.

1. The government is going to tear down that ugly, old building. It is a real \_\_\_\_\_ .
2. He is very popular. He was elected as class president by a \_\_\_\_\_ vote.
3. When you are driving to Manhattan, you see many tall \_\_\_\_\_ .
4. My new fence is made of \_\_\_\_\_ , so I can grow plants up the side.
5. We have to \_\_\_\_\_ our proposal to the committee, and they will decide.
6. The telephone company is coming to \_\_\_\_\_ a new phone line today.
7. The new restaurant has a lot of \_\_\_\_\_ . It has great food and great prices.
8. The view of the city from our apartment is fantastic. It is really \_\_\_\_\_ .
9. The workers are going to \_\_\_\_\_ the company's plan to cut wages.
10. There is a viewing \_\_\_\_\_ on top of the tower.
11. Many buildings were \_\_\_\_\_ in the last earthquake
12. That painting is a \_\_\_\_\_ . It is worth millions of dollars.

## Discussion

1. The Eiffel Tower is the most recognized monument in Europe.  
Together with your group members, make a list of other well-recognized monuments around the world.
2. When Gustave Eiffel's design was first chosen, many people felt it would be an eyesore. Are there any public monuments in your city that you think are ugly or that are not popular among the people of your city?
3. Who do you think should choose the designs for public monuments? Should the public have a say in the decision if public taxes are being used to build the monument?
4. The Eiffel Tower was built as an entranceway to the 1889 World's Fair. Have you ever been to a World's Fair? Where will the next World's Fair be held?