

Parts of Speech

1	Grammar Notes	2
2	Parts of Speech	7
3	Words	8
4	Cards	9
5	Questions	10
6	Sentences	11
7	Board Race	13
8	Quiz	14

1 Grammar Notes

Parts of speech are like building blocks.
We build sentences using parts of speech.



There are **7** main parts of speech.

noun

verb

article

adjective

adverb

preposition

conjunction

1 Grammar Notes cont.

1. Nouns & Pronouns

Nouns are people, places, or things.

- woman
- student
- dog
- house
- city
- book
- table
- phone
- apple

Pronouns are words that can take a noun's place.

- I
- you
- she
- he
- we
- they
- him
- us
- my
- your
- theirs
- myself

Nouns and pronouns can be subjects (S) or objects (O) of a sentence. Subjects come **before the verb (V)** and objects come **after the verb**.

Examples:

- **People** like **him**.

S V O

- The **girl** ate an **apple**.

S V O

- **She** went to **Hawaii**.

S V O



1 Grammar Notes cont.

2. Verbs

Verbs are actions.

- run
- walk
- sing
- study
- buy
- talk
- swim
- be
- have

Verbs come **after the subject** in a sentence.

Examples:

- My sister **jogs**.
- He **buys** milk once a week.
- Jane **is** a teacher.



3. Articles

Articles give information about nouns (how many, general or specific, etc.).

- a
- an
- the

Articles come **before a noun**.

Examples:

- **a** puppy
- **an** orange
- **the** books



1 Grammar Notes cont.

4. Adjectives

Adjectives describe nouns (size, color, feeling, etc.).

- big • soft • happy
- warm • comfortable • tired
- tall • green • exciting

Adjectives come **before a noun** or **after the Be verb**.

Examples:

- I see a **yellow** flower.
- The flower is **yellow**.



5. Adverbs

Adverbs describe verbs (how, how often, etc.). Most adverbs end in *-ly*.

- quickly • messily • always • sometimes
- loudly • badly • often • never

“How” adverbs come **after the verb**.

“How often” adverbs come **before the verb**.

Examples:

- She runs **quickly**. (*How does she run?*)
- He speaks **softly**. (*How does he speak?*)
- They **always** sing. (*How often do they sing?*)
- My brother **never** watches TV. (*How often does he watch TV?*)



1 Grammar Notes cont.

6. Prepositions

Prepositions give information about nouns (direction, time, place, etc.).

- in
- at
- over
- under
- on
- to
- around
- between

Prepositions come **before a noun**.

Examples:

- **to** school
- **in** July
- **at** home



7. Conjunctions

Conjunctions join two sentences or two similar parts of speech.

- for
- and
- nor
- but
- or
- yet
- so

Conjunctions come **between** two nouns, two verbs, two adjectives, two adverbs, or two sentences.

Examples:

- I love **cake and ice cream**.
- You can **call or text** me.
- Our cat is **cute and lazy**.
- The ballerina dances **beautifully and gracefully**.
- She **brushes her teeth and washes her face** before bed.
- **My brother likes Tracy, but he never says a word to her.**



Tip:

Remember common conjunctions easily with the word “fanboys” (it uses the first letter from each conjunction).

2 Parts of Speech

What does each part of speech do?

Complete the chart with the correct part of speech.

Parts of Speech

- noun
- article
- adverb
- conjunction
- verb
- adjective
- preposition

#	Clue	Part of Speech
1	describes a verb	
2	is a person, place, or thing	
3	is an action	
4	describes a person, place, or thing	
5	joins two words or sentences	
6	shows direction, time, or place	
7	includes <i>a</i> , <i>an</i> , and <i>the</i>	

3 Words

Write the part of speech next to each word.

You can write the short form from the list in the box.

_____ 1 book

_____ 2 chair

_____ 3 in

_____ 4 write

_____ 5 and

_____ 6 the

_____ 7 slowly

_____ 8 piano

_____ 9 an

_____ 10 speak

_____ 11 have

_____ 12 elephant

_____ 13 lesson

_____ 14 fridge

_____ 15 pink

_____ 16 hungry

_____ 17 but

_____ 18 quietly

_____ 19 soft

_____ 20 or

_____ 21 read

_____ 22 listen

_____ 23 to

_____ 24 a

_____ 25 tree

_____ 26 happily

_____ 27 learn

_____ 28 so

_____ 29 patiently

_____ 30 sleepy

Short Forms:

- Noun = N
- Pronoun = Pn
- Verb = V
- Article = Art
- Adjective = Adj
- Adverb = Adv
- Preposition = Prep
- Conjunction = Conj

4 Cards

Get into small groups.

Your teacher will give you some word cards.

When it is your turn, read out the word on the card.

DO NOT read out the part of speech below the word.

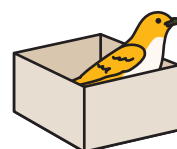
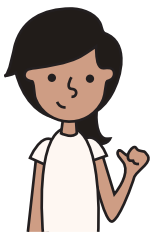
Your group members will try to guess the part of speech.

Whoever guesses correctly first gets to keep the card.

Whoever has the most cards at the end is the winner!

Who is the winner? _____

How many cards does he/she have? _____



5 Questions

Can you answer these questions about parts of speech?

- 1** What is a noun?
 - a)** an action
 - b)** a word that describes a verb
 - c)** a person, place, or thing
- 2** What is an adverb?
 - a)** a word that describes a noun
 - b)** a word that describes a verb
 - c)** a word that gives information about direction, time, or place
- 3** What is a pronoun?
 - a)** a word that takes the place of a noun
 - b)** a word that joins two similar parts of speech
 - c)** a word that describes a noun
- 4** What is a conjunction?
 - a)** a person, place, or thing
 - b)** a word that describes verbs
 - c)** a word that joins two similar parts of speech
- 5** Where does an adjective go in a sentence?
 - a)** before a noun
 - b)** after the Be verb
 - c)** both a and b
- 6** Where does an article go in a sentence?
 - a)** before a verb
 - b)** before a noun
 - c)** both a and b
- 7** Where does a verb go in a sentence?
 - a)** after the subject
 - b)** before the object
 - c)** both a and b
- 8** Where does an adverb go in a sentence?
 - a)** after a verb
 - b)** before a verb
 - c)** both a and b

6 Sentences

Write the part of speech for each word in these sentences.

Short Forms:

- | | | | |
|----------------|-----------------|-------------------|----------------------|
| • Noun = N | • Verb = V | • Adjective = Adj | • Preposition = Prep |
| • Pronoun = Pn | • Article = Art | • Adverb = Adv | • Conjunction = Conj |

1 Sneakers are comfortable.

a b c

a) _____ b) _____ c) _____

2 The teacher speaks quickly.

a b c d

a) _____ b) _____ c) _____ d) _____

3 They live in a big, red house.

a b c d e f g

a) _____ b) _____ c) _____ d) _____

e) _____ f) _____ g) _____



6 Sentences cont.

Short Forms:

- | | | | |
|----------------|-----------------|-------------------|----------------------|
| • Noun = N | • Verb = V | • Adjective = Adj | • Preposition = Prep |
| • Pronoun = Pn | • Article = Art | • Adverb = Adv | • Conjunction = Conj |

4 The young woman always eats a healthy breakfast.

a b c d e f g h

a) _____ b) _____ c) _____ d) _____

e) _____ f) _____ g) _____ h) _____

5 The kids play tennis and baseball on Saturdays.

a b c d e f g h

a) _____ b) _____ c) _____ d) _____

e) _____ f) _____ g) _____ h) _____

6 I always read books, but you never read books.

a b c d e f g h i

a) _____ b) _____ c) _____ d) _____

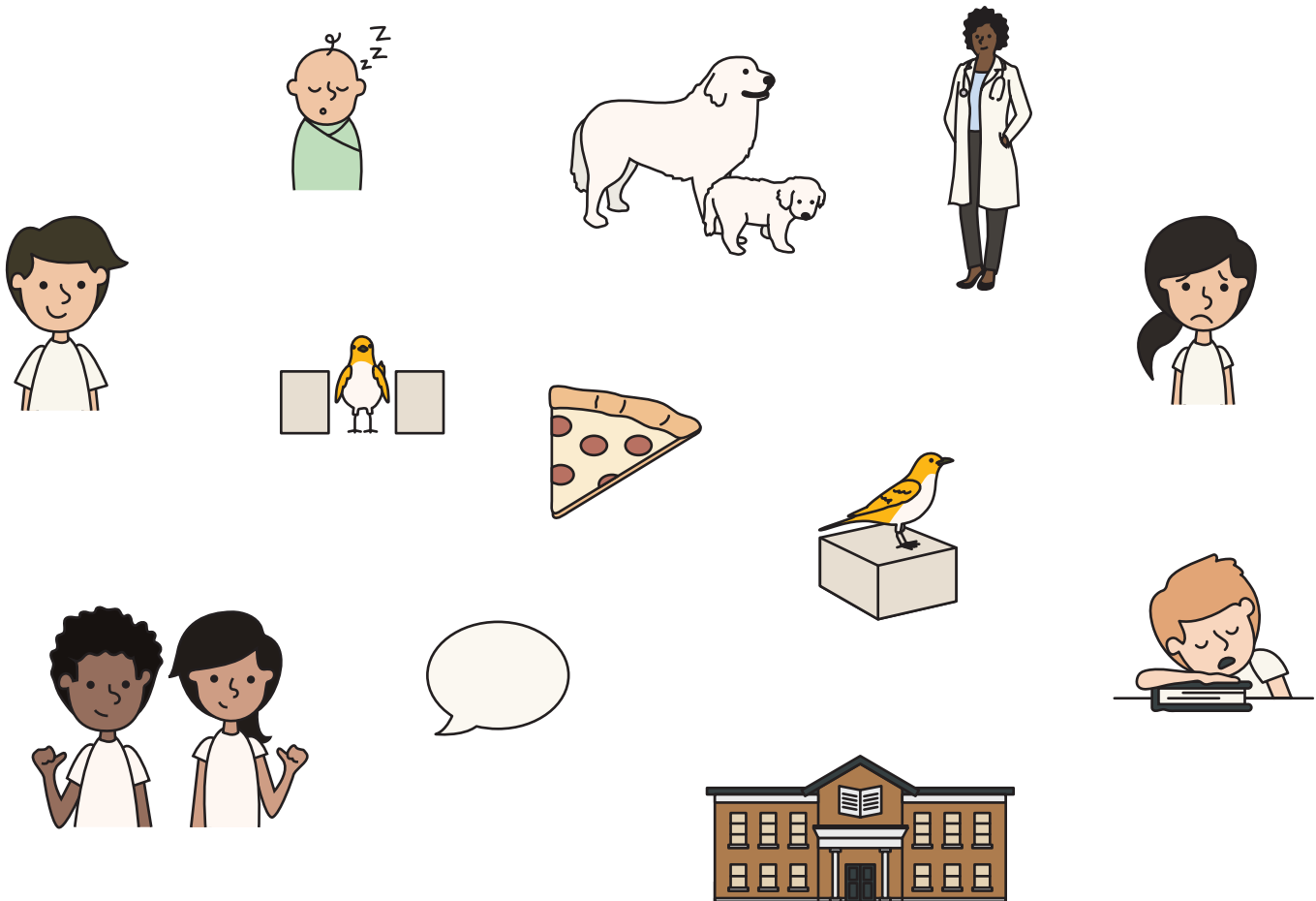
e) _____ f) _____ g) _____ h) _____ i) _____

7 Board Race

You and your teammates will take turns writing the part of speech that matches the words on the board. The team that finishes first wins!

My team's name: _____

The winning team is: _____



8 Quiz

What part of speech is each **bold** word?
Circle the correct answer.

- 1 Doctors help people.
a) noun
b) verb
c) adjective
- 2 He has a dog **and** a cat.
a) noun
b) conjunction
c) adjective
- 3 The old man drives **slowly**.
a) adjective
b) preposition
c) adverb
- 4 I eat **an** apple every day.
a) article
b) noun
c) conjunction
- 5 Some **children** never watch TV.
a) verb
b) article
c) noun
- 6 She wears **big** earrings.
a) article
b) adjective
c) adverb
- 7 I go **to** school on weekdays.
a) conjunction
b) verb
c) preposition
- 8 **The** kids on my street like ice cream.
a) noun
b) article
c) adjective
- 9 We learn English **at** school.
a) preposition
b) adjective
c) article
- 10 The store **opens** at 9:00 am.
a) noun
b) verb
c) adjective
- 11 People **often** smile at babies.
a) preposition
b) verb
c) adverb
- 12 I **drink** coffee on the bus.
a) verb
b) noun
c) adverb